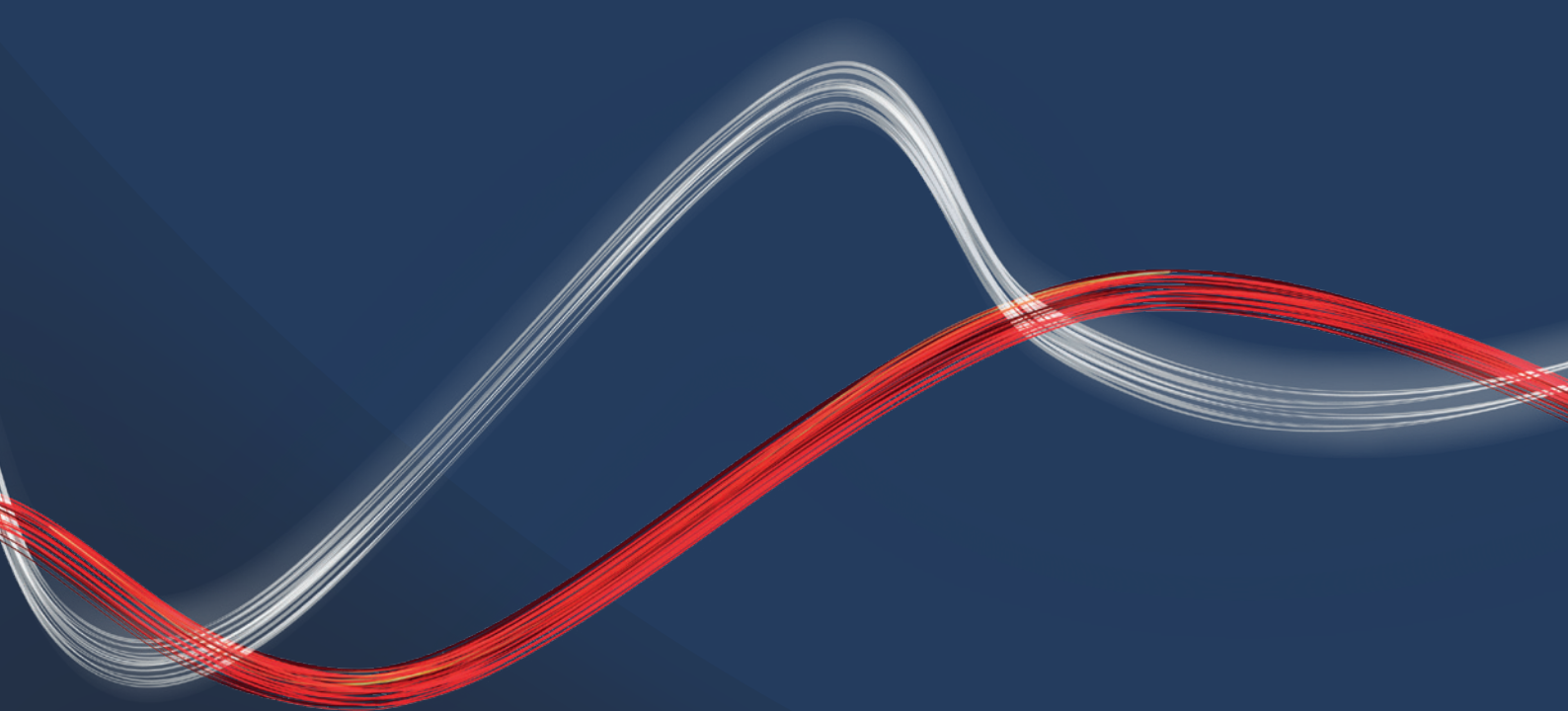


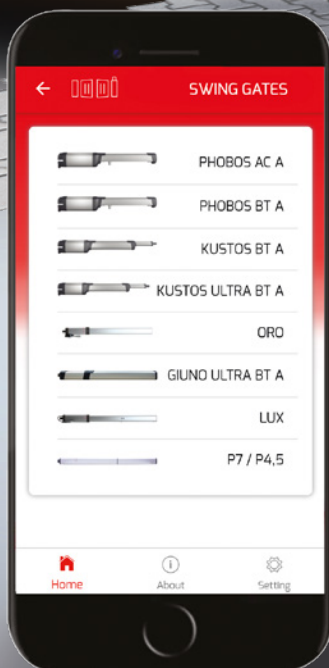
GATE HARDWARE

Accessories and hardware
for gate installations

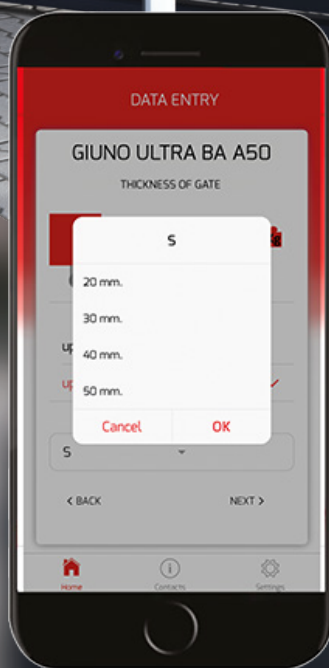


Be ahead

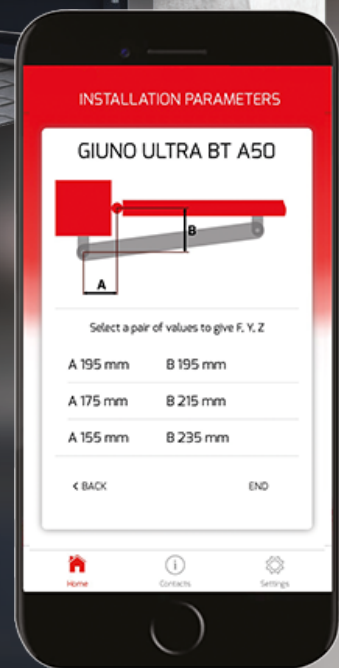
Calculate the gate geometry easily with the new Easy Set App



1. Choose your operator



2. Enter the dimensions and opening angle



3. The App provides options to position the post bracket

The exclusive Bft Easy Set app helps Professional Installers to calculate the geometry for swing gates with a few simple steps. Enter the dimensions and opening angle and the App provides options to position the post bracket. The Easy Set app has a simple and intuitive interface and comes with pre-programmed details of Bft Automation's swing gate operator range. The App is available for Android and iOS.



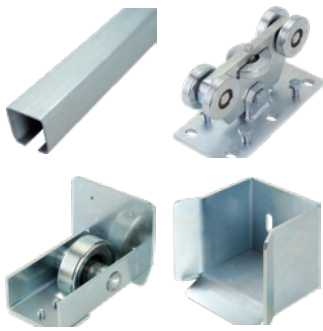
Be ahead

North 0161 456 0456

South 01488 674 750

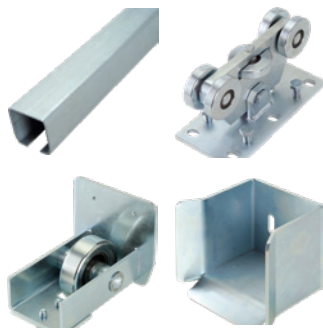
www.bftautomationuk.com

Small cantilever kit **5-wheel kit**



Code	Description	Weight
COM3995Z-6	Cantilever small channel 6m (also available as 9m kit)	31 kg
COM3955	Carriages (x2)	12 kg
COM3965	Guide Wheel (x2)	2 kg
COM3975	End Stop (x2)	2 kg

Medium cantilever kit **5-wheel kit**



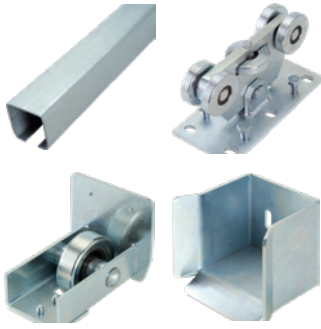
Code	Description	Weight
COM399MZ-6	Cantilever medium channel 6M (also available as 9m kit)	77 kg
COM395M	5-wheel Carriages (x2)	28 kg
COM396M	Guide Wheel (x2)	4 kg
COM397M	End Stop (x2)	4 kg

Medium cantilever kit **9-wheel kit**



Code	Description	Weight
COM399MZ-6	Cantilever medium channel 6M (also available as 9m & 12m kit)	77 kg
COM9999M	9-wheel Carriages (x2)	36 kg
COM396M	Guide Wheel (x2)	4 kg
COM397M	End Stop (x2)	4 kg

Large cantilever kit **5-wheel kit**



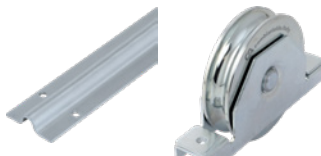
Code	Description	Weight
COM399LZ-6	Cantilever large channel 6m (also available as 9m & 12m kit)	132 kg
COM395L	5-wheel carriages (x2)	88 kg
COM396L	Guide Wheel (x2)	8 kg
COM397L	End Stop (x2)	8 kg

Large cantilever kit **9-wheel kit**

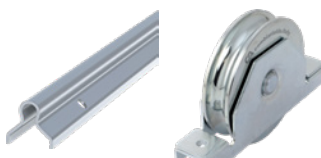


Code	Description	Weight
COM399LZ-6	Cantilever large channel 6m (also available as 9m, 12m & 15m kit)	132 kg
COM9999L	9-wheel carriages (x2)	106 kg
COM396L	Guide Wheel (x2)	8 kg
COM397L	End Stop (x2)	8 kg

Track and wheels **kit**



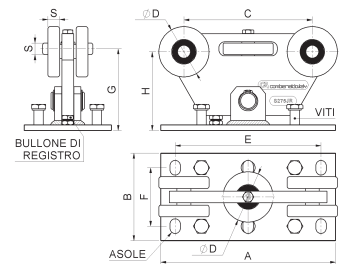
Track	Wheels
6m Bolt down track (3m lengths)	430-100 wheels (x2)
9m Bolt down track (3m lengths)	430-120 wheels (x2)



Track	Wheels
6m Concrete in track (6m lengths)	430-100 wheels (x2)
12m Concrete in track (6m lengths), Pin	430-120 wheels (x2)

Com 395

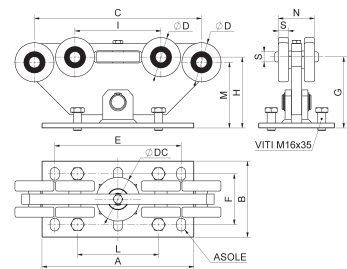
5 wheels cantilever gate carriage



Code	mm.	A	B	C	ØD	E	F	G	H	S	Holes	Bolts	Bolt type
395.S	Small	180	150	135	Ø59	125	100	100	100	15	n.4 18x25	-	M8
395.M	Medium	300	150	220	Ø86	250	100	140	135	20	n.6 18x25	M16x35	M12
395.L	Large	500	200	380	Ø126	440	150	202	197	30	n.6 22x30	M16x35	M12

Com 9999

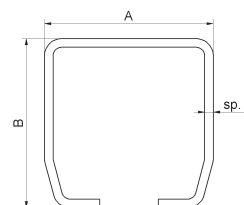
9 wheels cantilever gate carriage



Code	mm.	A	B	C	ØD	ØDC	E	F	G	H	I	L	M	N	S	Holes	Bolts
9999.M	Medium	300	150	330	Ø77	Ø86	250	100	140	139,5	170	160	129,5	71,5	20	n.6 18x25	n.4 M16x35
9999.L	Large	500	200	500	Ø117	Ø126	440	150	202	201,5	260	320	191,5	108,5	30	n.6 22x30	n.4 M16x35

Com 399

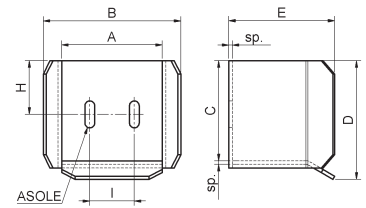
Cantilever gate track



Code	Code Galvanised	mm.	A	B	sp.	Length
399.S3-sp4	399Z.P3-sp4	Small	69	69	4	3 m
399.S6-sp4	399Z.P6-sp4	Small	69	69	4	6 m
399.M3	399Z.M3	Medium	98	98	5	3 m
399.M6	399Z.M6	Medium	98	98	5	6 m
399.L3	399Z.G3	Large	140	140	6	3 m
399.L6	399Z.G6	Large	140	140	6	6 m

Com 397

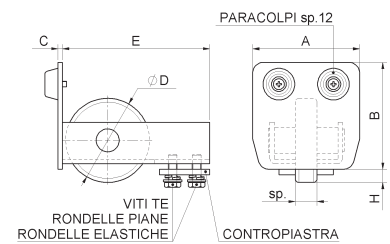
End stop



Code	mm.	A	B	C	D	E	sp.	I	H	Holes
397.S	Small	81	115	77	95	104	2,7	38	40	11x30
397.M	Medium	113	154	112	133	119	4	50	60	11x30
397.L	Large	154	203	155	180	140	5	75	82	13x35

Com 396

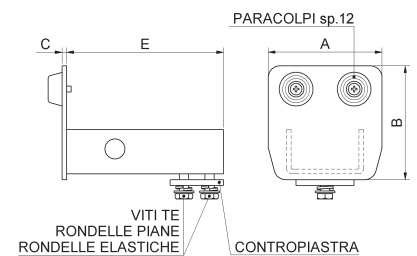
End guide wheel



Code	mm.	A	B	C	ØD	E	H	sp.	Bolt type	Counterplate	Stops
396.S	Small	67	67	4	Ø67	120	14,5	15	M8	50x46 sp.5	1
396.M	Medium	98	98	4	Ø77	135	12	20	M8	50x46 sp.5	2
396.L	Large	140	140	5	Ø97	165	13,5	30	M10	90x60 sp.6	2

Com 396 R

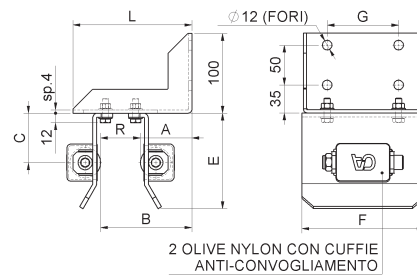
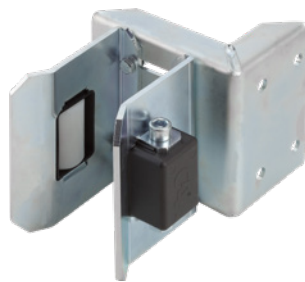
End guide without wheel



Code	mm.	A	B	C	E	Stops	Counterplate	Bolts
396R.S	Small	67	67	4	120	1	50x46 sp.5	M8
396R.M	Medium	98	98	4	135	2	50x46 sp.5	M8
396R.L	Large	140	140	5	165	2	90x60 sp.6	M10

Com 467

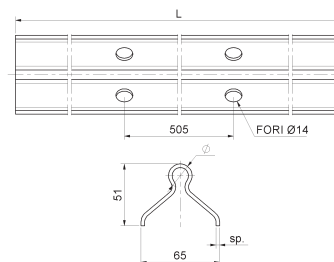
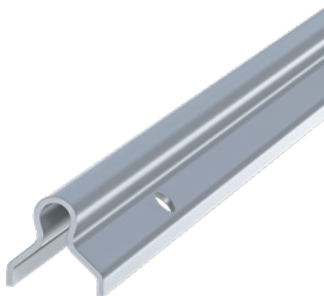
Adjustable end cup 2 guide rollers to be fixed



Code	mm.	A	B	C	E	F	G	L	R	Bolt type
467.S	Small	41-109	71-139	54	105	80	40	150	30-98	M8
467.M	Medium	41-109	71-139	62	120	154	90	150	30-98	M8
467.L	Large	61-189	91-219	62	120	154	90	230	30-158	M10

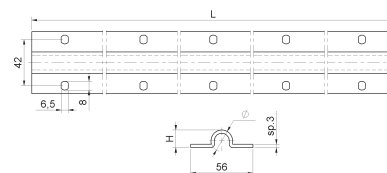
Com 904/905

Embedded round
open track



Com 902

Round surface track



Com 901

Joining pin for use with embedded round track and surface track



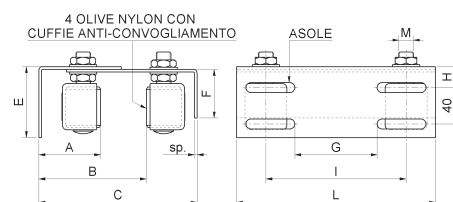
Com 903

Joining pin for use with embedded round track



Com 462

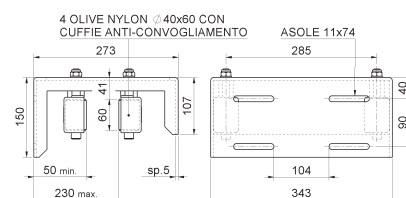
Adjustable upper guide bracket 4 guide rollers



Code	mm.	A	B	C	E	F	G	H	Holes	L	sp.	I	M	Roller
462.S	Small	43-86	93-156	149-197	76	54	91	21	11x54	220	3	155	M14	Ø30x40
462.M	Medium	47-90	89-151	149-197	76	54	91	21	11x54	220	3	155	M16	Ø40x45
462.L	Large	49-91	110-195	200-243	81	74	157	26	11x63	350	4	285	M16	Ø40x60

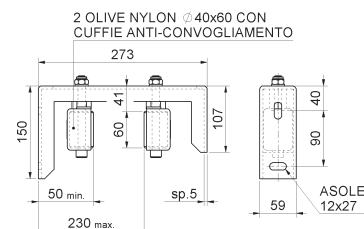
Com 463

Adjustable heavy upper guide bracket 4 guide rollers



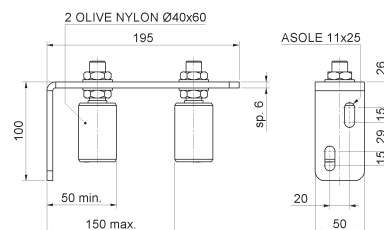
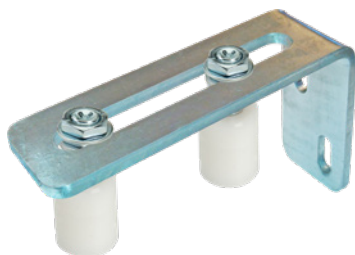
Com 464

Adjustable heavy upper guide bracket 2 guide rollers



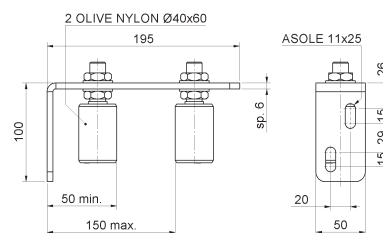
Com 456

Adjustable upper guide bracket 2 guide rollers



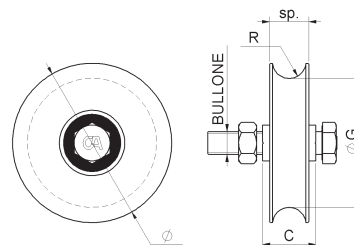
Com 458

Adjustable side guide bracket with guide roller



Com 400

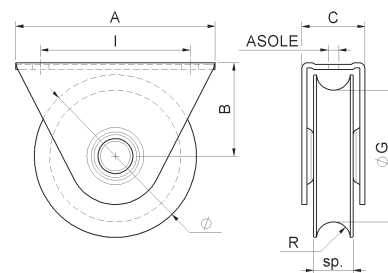
Wheel round groove
1 bearing



Code	Ø	C	ØG	sp.	R	Bolt type	Bearing	Track	Max. weight
400.100/20	100/20	33	Ø79	24	10,3	M14x70	1	902 Ø20	230 Kg

Com 410

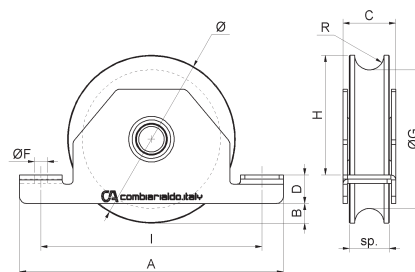
Wheel w/outside support round groove 1 bearing



Code	Ø	A	B	C	ØG	I	Hole	sp.	R	Bearings	Track	Max. weight
410.80/20	80/20	120	48	37	Ø59	90	8,5x12	24	10,3	1	902 Ø20	Kg 200
410.100/20	100/20	120	56	38	Ø79	90	8,5x12	24	10,3	1	902 Ø20	Kg 230

Com 430

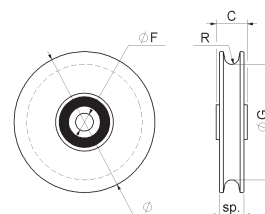
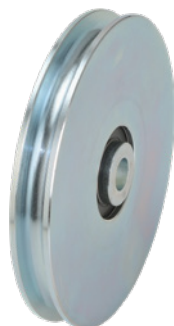
Wheel w/inside support round groove 2 bearings



Code	Ø	A	B	C	D	ØF	I	H	ØG	sp.	R	Bearing	Track	Max. weight
430.90	90	155	9	33	18	Ø9	130	61	Ø71	24	10,3	2	902 Ø20	390 Kg
430.100	100	155	14	33	18	Ø9	130	66	Ø77	24	10,3	2	902 Ø20	410 Kg
430.120	120	185	14	37	20	Ø9	155	84	Ø97	28	10,3	2	902 Ø20	430 Kg
430.140	140	205	15	42	22	Ø11	175	100	Ø117	32	10,3	2	902 Ø20	550 Kg
430.160	-	-	-	-	-	Ø9	-	-	-	32	10,3	2	902 Ø20	630 Kg

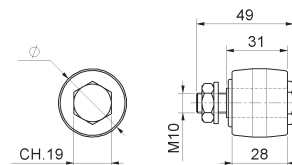
Com 445

Rope wheel



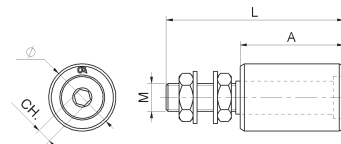
Com 448

Convex nylon roller



Com 450

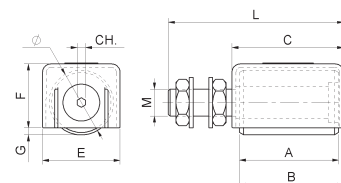
Nylon roller



Code	Ø	A	L	CH	M
450.25x30	25x30	33	65	Es.6	M14
450.30x40	30x40	40	76	Es.6	M14
450.40x45	40x45	45	83	Es.8	M16
450.40x60	40x60	60	102	Es.8	M16

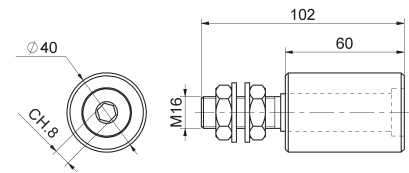
Com 450 SKH

Nylon roller with full length cover to the roller to aid safety



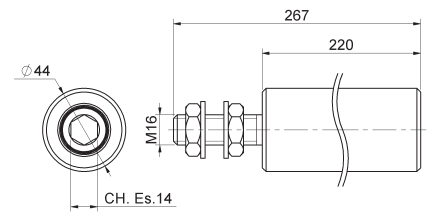
Com 453

Soft scratch-proof
black nylon roller



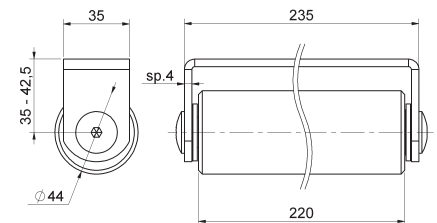
Com 452

Long nylon roller



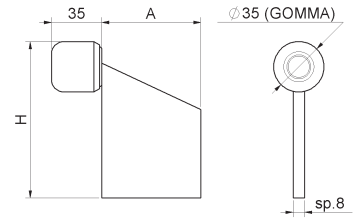
Com 452 PST

Nylon roller long
with support fixed



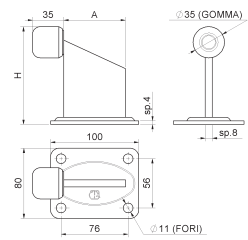
Com 381

Sliding gate stop
to be welded



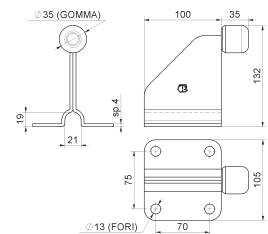
Com 382

Sliding gate stop
screw fix



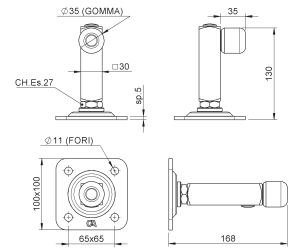
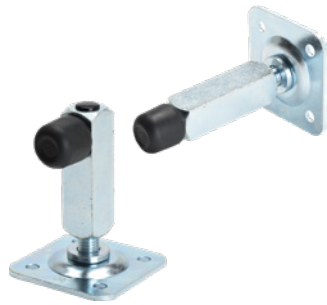
Com 383

Sliding gate stop
screw fix



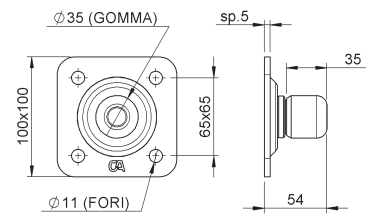
Com 386

Sliding gate convertible stop



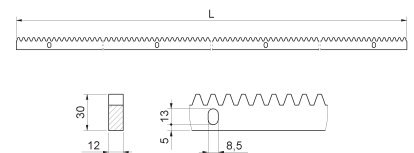
Com 386 W

Sliding gate wall stop



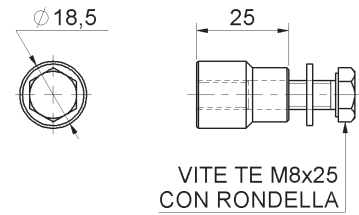
Com 805

Rectangular sliding gate rack



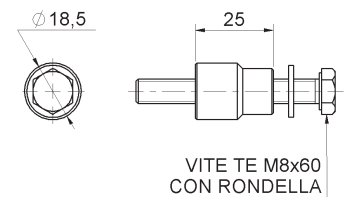
Com 810

Drive rack spacer, weld on c/w rack fixing bolt & washer



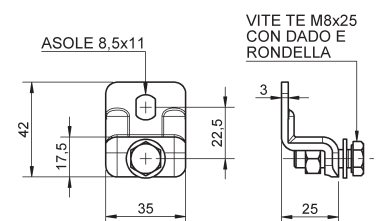
Com 811

Drive rack spacer, weld or drill & tap fix with the extended length rack fixing bolt & washer



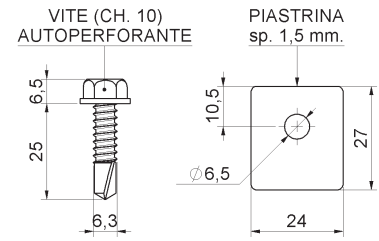
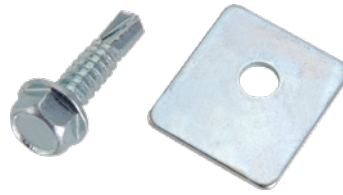
Com 813

Drive rack spacer with adjustment slot, NO welding required c/w rack fixing & screw



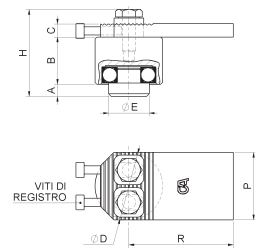
Com 829

Hardware fixing
for nylon rack



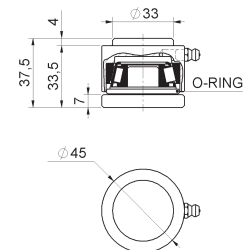
Com 345 R

Adjustable hinge
w/screws w/bearing



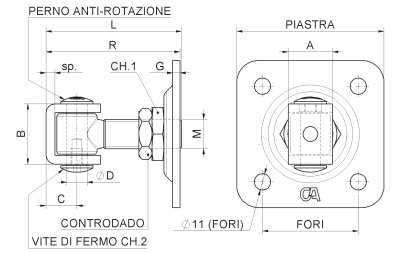
Com 346 P

Small bottom plate
w/thrust bearing
w/grease cup



Com 378

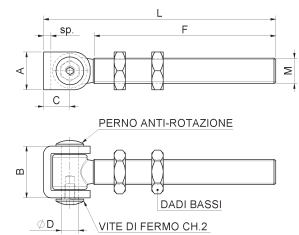
Adjustable u-bolt hinge with plate



Code	mm.	A	B	C	ØD	G	L	sp.	M	R	CH.1	CH.2	Holes	Plate
378.18	M18	30	41	21	Ø14	5	81	6	M18	68-80	Es.36	Es.5	56x56	80x80
378.22	M22	35	48	25	Ø17	5	96	6	M22	76-95	Es.36	Es.6	65x65	100x100
378.24	M24	35	48	25	Ø17	5	106	6	M24	77-105	Es.36	Es.6	65x65	100x100

Com 379

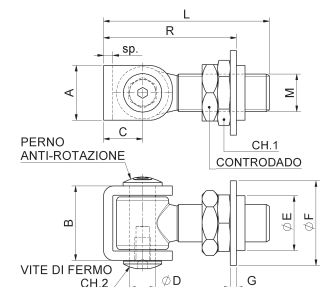
Long u-bolt hinge with 2 nuts



Code	mm.	A	B	C	ØD	F	L	sp.	M	CH.2
379.20	M20	30	41	21	Ø14	142	185	6	M20	Es.5
379.24	M24	35	47,5	25	Ø17	141	190	6	M24	Es.6

Com 375

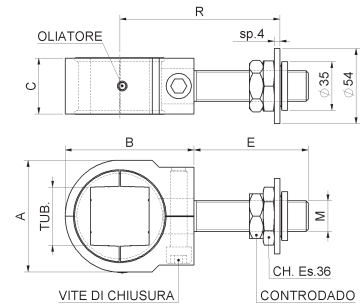
Adjustable u-bolt hinge



Code	mm.	A	B	C	ØD	ØE	ØF	L	sp.	G	M	R	CH.1	CH.2
375.18	M18	30	41	21	Ø14	Ø30	Ø46	82	6	4	M18	61-75	Es.30	Es.5
375.20	M20	30	41	21	Ø14	Ø30	Ø46	92	6	4	M20	61-86	Es.30	Es.5
375.24	M24	35	48	25	Ø17	Ø35	Ø54	106	6	4	M24	70-100	Es.36	Es.6

Com 845

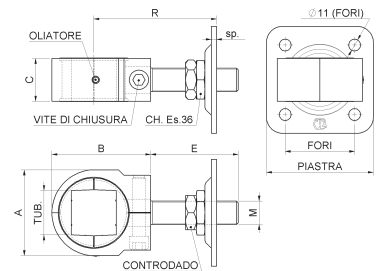
Adjustable self-assembly clamp - hinge nut with washer



Code	mm.	A	B	C	E	M	R	Bolt type
845.40	TUB.40	80	92,5	40	82	M22	77-129	M12
845.50	TUB.50	90	108	45	52	M24	87-109	M14

Com 848

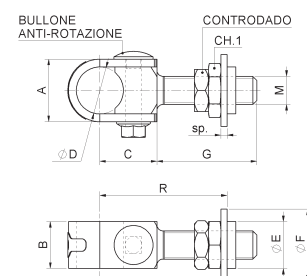
Adjustable self-assembly clamp - hinge with plate "matrix"



Code	mm.	A	B	C	E	M	sp.	R	Bolt type	Plate	Holes
848.40	TUB.40	80	92,5	40	82	M22	5	85-135	M12	100x100	65x65
848.50	TUB.50	90	108	45	52	M24	6	96-115	M14	120x120	90x90

Com 850

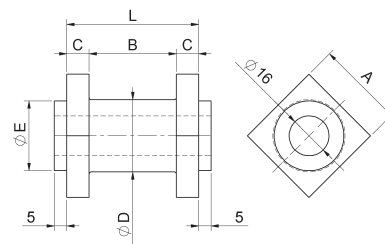
Adjustable clamp - hinge nut with washer



Code	mm.	A	B	C	ØD	ØE	ØF	G	M	R	sp.	Bolt type	CH.1
850.18	M18	40	30	36,5	Ø30	Ø30	Ø46	64	M18	63-92	4	M10	Es.30
850.22	M22	47	35	42,5	Ø35	Ø35	Ø54	72	M22	70-107	4	M12	Es.36
850.27	M27	52	40	48,5	Ø40	Ø45	Ø71	72	M27	82-111	6	M12	Es.46

Com 861 G

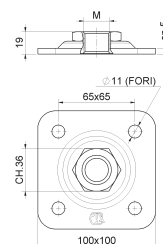
Square joint pin for upper guide clamp - hinge



Code	Ø	tub.	Hinge size	A	B	C	ØD	ØE	L
861G.40/35	35	40	M22	40x40	40	9	Ø34	Ø33	58
861G.50/40	40	50	M27	50x50	45	10	Ø39	Ø43	65

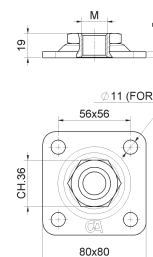
Com 860 P

Adjustable plate



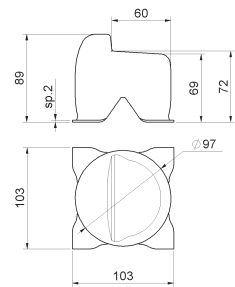
Com 860 S

Adjustable plate



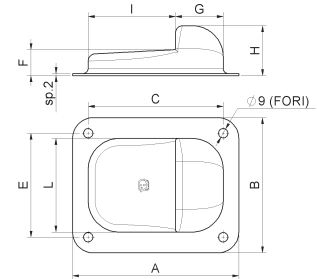
Com 380

Embedded swing gate end stop



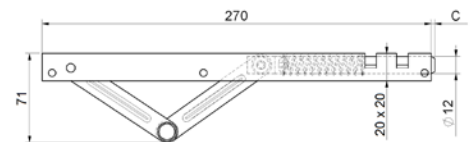
Com 380 F

Swing gate stop screw fix



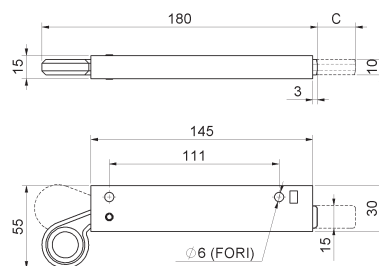
Com 300 IX

Stainless steel spring loaded retractable bolt for use on swing gates



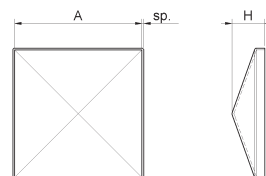
Com 301 IX

Automatic spring bolt gate closer with brass lever



Com 340

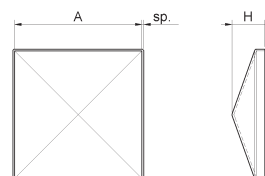
Square post cap



Code	Code Galvanised	mm.	A	H	sp.
340.60	340Z.60	60	61x61	20	1,5
340.100	340Z.100	100	101x101	26	1,5
340.120	340Z.120	120	121x121	29	1,5
340.150	340Z.150	150	151x151	35	1,5

Com 340 IX

Stainless steel square post cap



Code	mm.	A	H	sp.
340IX.80	80	81x81	22	1,5
340IX.100	100	101x101	26	1,5



North Office

Units C2-C3 The Embankment
Business Park, Vale Road, Heaton
Mersey, Stockport, SK4 3GL

T. 0161 456 0456
F. 0161 456 9090
E. north.uk@bft-automation.com

South Office

Enterprise House, Murdock Road,
Dorcan, Swindon
SN3 5HY

T 01488 674 750
F 01488 674 790
E. south.uk@bft-automation.com



Be ahead